

DJEG

Complete CI/CD Development Platform

Continuous Integration, Testing and Deployment Pipelines,
Centralized Account Management,
Monitoring and Log Aggregation



S H A L B

PROBLEM

A long time (3-6 month) and special skills and knowledges are required to deliver complete CI/CD system for software product development. Beside the basic CI/CD functions - to deliver source code to operational environments you need to implement: artefact storage, centralized account and security management, build/test/deploy logs aggregation, monitoring, alerting, etc...



SOLUTION

Easy to install pre-configured
CI/CD system created following
best DevOps and SRE practices

Product name: **DJEG**

Abbreviation for Docker Jenkins

Elasticsearch Grafana

jenkins - My Bloody jenkins that watches changes from custom configs set

Idap - a simple Openldap server that is prepopulated on startup using custom.ldif

Idap-admin - a simple ldap php admin for managing ldap php ldap admin

nexus - Sonatype Nexus Repository Manager 3, from Nexus

registry - nexus hosted docker repo: Nexus registry

nginx_env_proxy - nginx proxy service with LE SSL automation

static jenkins slave with the possibility of customization. **Dockerfile**

Integrated system for the full cycle product development, from the source code to operational environments. With preconfigured Continuous Integration, Testing and Delivery, Log Aggregation, Monitoring, Alerting and centralized account management. Requires only **15 minutes** to deploy instead of 3-6 month of integration.

FEATURES

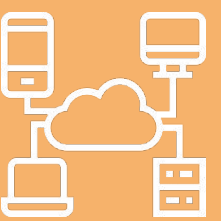
- + Deploy a CI/CD systems (Jenkins, Spinnaker, Nexus) from scratch using scripts.
- + Complete development infrastructure installation with IaC (Infrastructure as a Code) approach.
- + Centralized user management for all integrated systems using OpenLDAP.
- + "ELK"-stack deployment for services and CI/CD jobs logging.
- + Alerting with Elsalert to notify developers on logs events on any environment.
- + Notification to Slack, Email or any other channels.
- + Deploy metrics and monitoring with Prometheus and Grafana with service autoconfiguration.
- + Templated infrastructure patterns with Terraform.
- + Deployment to any platform like AWS, Google Cloud, Kubernetes, Azure, Openstack.



ADVANTAGES



Require only 15 min for installation and basic configuration.



Preconfigured: Continuous Integration, Testing and Delivery, Log Aggregation, Monitoring, Alerting, Centralized account management.



Based only on open source software.

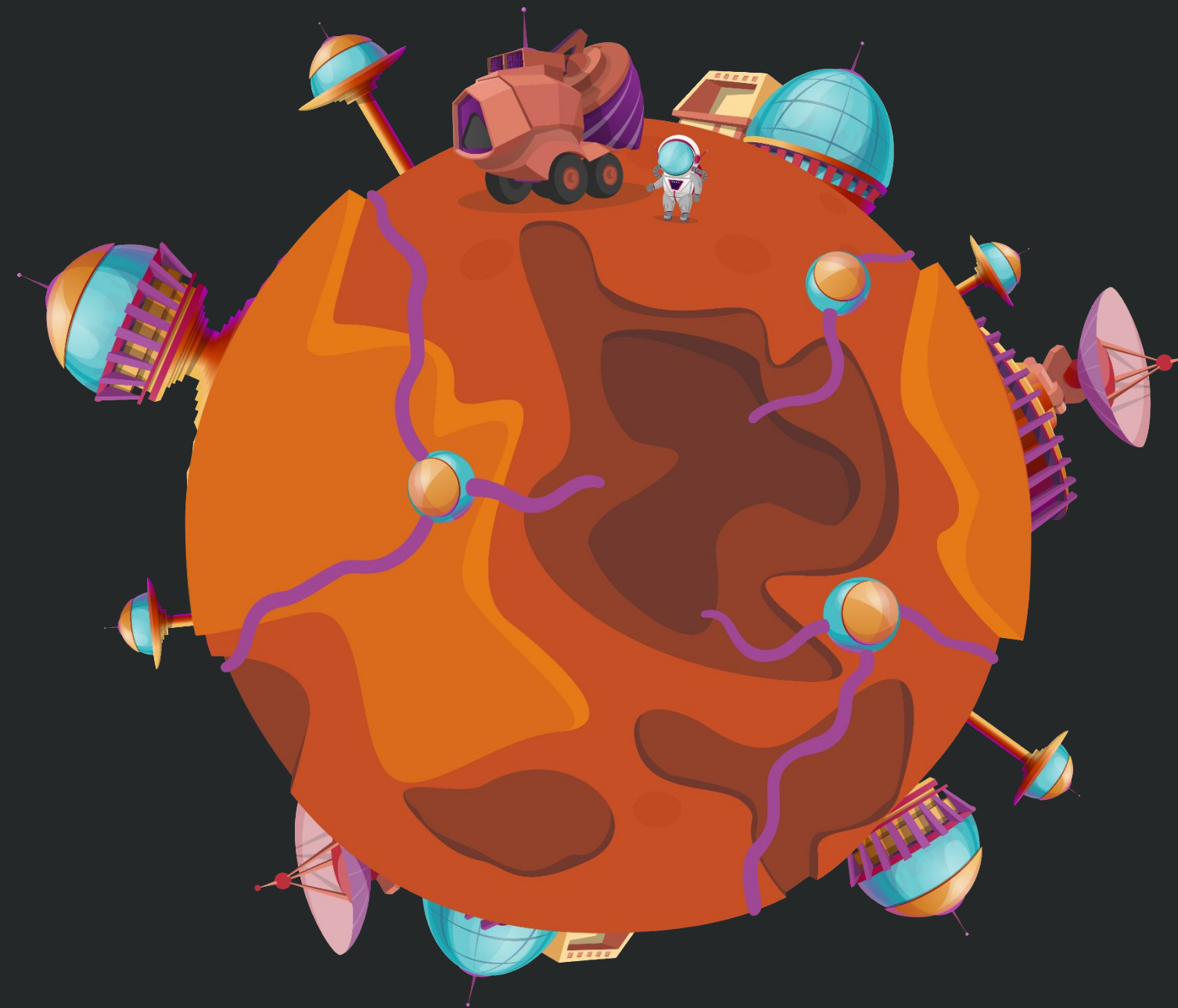


FREE

CONTACT US

SHALB

Pavlivska str. 17 (12th floor),
01054, Kyiv, Ukraine
+38 (044) 232-54-67
sales@shalb.com
www.shalb.com





Thank you!
